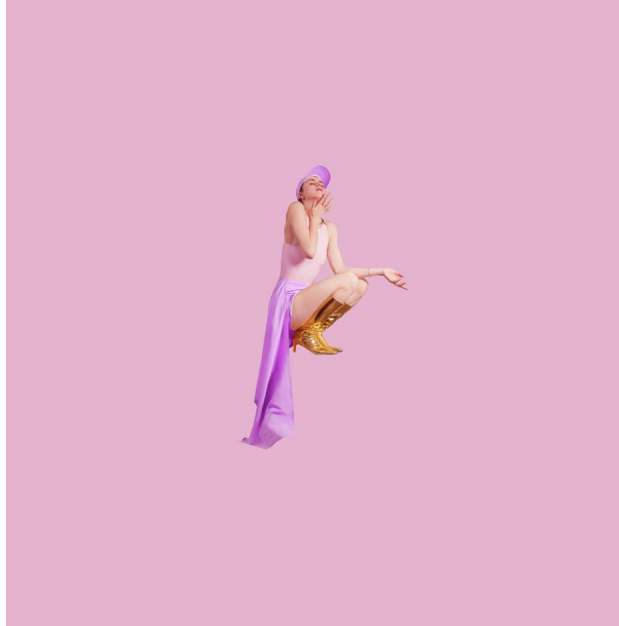


LASS - TECHNICAL RIDER



PA System:

PA system should be adequate to the venue capacity. We do it loud! Max. 115 dB SPL is needed. PA system should be installed, correctly tuned and checked before arrival of the band. We do not accept any ground hums and electric buzzes. Organiser should make sure, that the PA system was produced by familiar brand. Preferred systems: (Meyer Sound, d&b, Dynacord Cobra, ElectroVoice, Nexo, JBL, etc.). We play only on three-way systems.

F.O.H:

Mixing console should be set in a position that allows the sound engineer to get a right assessment of the sound. Mixer should be placed in the stage's centre axis, among the audience, with right protection. We do not accept any places like under the balcony, behind the bar, up to wall, behind the PA system, and so on. For the time of soundcheck we need a communications mean between front console and the stage with microphone equipped with on-off button.

We need at least 24-channel digital mixing console with 4 aux/returns; in all channels: phantom +48V, pad -20 dB, phase invert switch, regulated HP filter, 4- band EQ with sweepable filters (Q, F, gain), at least 3 x aux post per channel.

Preferred consoles: **Soundcraft Vi, Soundcraft Si, Midas M32 (full version), Presonus StudioLive 24 or 32, Behringer X32 (full version)**. We do accept DiGiCo, Midas Pro and Digidesign Venue only with a permanent presence of a qualified console operator during the soundcheck and the concert. Another digital consoles and, alternatively, analogue consoles, can be accepted only if it was agreed beforehand with band's sound engineer.

In the case of an analogue console we require high quality stereo compressor (Klark-Teknik, Drawmer, DBX 1066) and 31-band graphic EQ (Klark- Teknik, BSS, DBX) on the stereo sum, and also two high quality reverbs (Lexicon PCM-60/90/80, MX300/400 etc.) and one tap delay (TC Electronic M-One, D-Two etc.), as well as the rest of the outboard included in the input list.

Duration of a soundcheck is at least 120 minutes.

Monitors:

I use my own **In Ear System Sennheiser EW 300 IEM G3 Freq.: 516-558MHz**

Please, provide two identical, high quality, at least two-way monitor speakers with 15' woofer, and moreover, one XLR line from the monitor console to a mixer placed near the drums. Monitor engineer should be communicative, relaxed and kind.

In the case of mixing monitors from F.O.H. console we require three channels AUX PRE inserted with 31-band graphic EQ. Duration of a soundcheck will be longer for 30 minutes. Monitor system should be tuned and checked before the band's arrival.

Stage:

Please, provide piano and guitar amplifier. We need two solid and stable vocal stands. **Please, provide at least three keyboard stands and one guitar stand.** The organiser must provide at least 4 diboxes. Please, use only high quality diboxes (BSS, Radial, Klark-Teknik etc.). Do not use wireless microphones, please!

Floor on a stage should be dry, the dimensions of the stage should be at least 6m x 5m (club) or 10m x 8m (open air). In the case of an open-air concerts, the stage must be protected by side and rear rainproof curtains. In the case of a winter open-air concerts we need the temperature of at least 20 degrees C. on the stage.

Power supply:

The organiser is fully responsible for safety of the musicians and their equipment, during all time of a soundcheck and concert. Power sockets must be free of ground hums and electric buzzes, with one source of electricity with 230V voltage. Please, provide at least 5 extension leads, all with at least 2 sockets compatible with plug types C, E & F (SCHUKO compatible).

Room for artist:

Please, prepare for us a room for at least 2 people. The room should be clean, dry, lockup, spacious and equipped with lighting; we need also at least two 230V power sockets compatible with plug types C, E & F; heating; at least 2 chairs; 1 table; big mirror; clothes hangers; iron and ironing board; paper towels and trash bin.

Catering: 3 x 0,5l plastic bottles of non-sparkling water; coffee, sodas, beers. Please, provide us a warm meal for 2 people.

Lighting:

We need a computer and a projector for visuals and a smoke machine. HAZE AND FOG ARE A INTEGRAL PART OF THE SHOW. Please make accommodations to allow this for pre-show focus and during the show.

CONTACT:

Management – Kasia Klimczyk, lass@lassmusic.pl , mobile: +48 790025725

INPUT LIST

CHANNEL	SOURCE	MIC/LINE
1.	LAPTOP	DIBOX/ miniJack 3,5mm
2.	OP-1	DIBOX/ miniJack 3,5mm
3.	Roland SPD-SX	2x Jack 6,3mm (stereo)
4.	Suzuki Q Chord	DIBOX/ Jack 6,3mm
5.	VOCAL	Shure SM57a or better/ XLR
6.	VOCAL	Shure SM57a or better/ XLR
7.	TC HELICON	XLR
8..	PIANO	
9.	Electric GUITAR	

