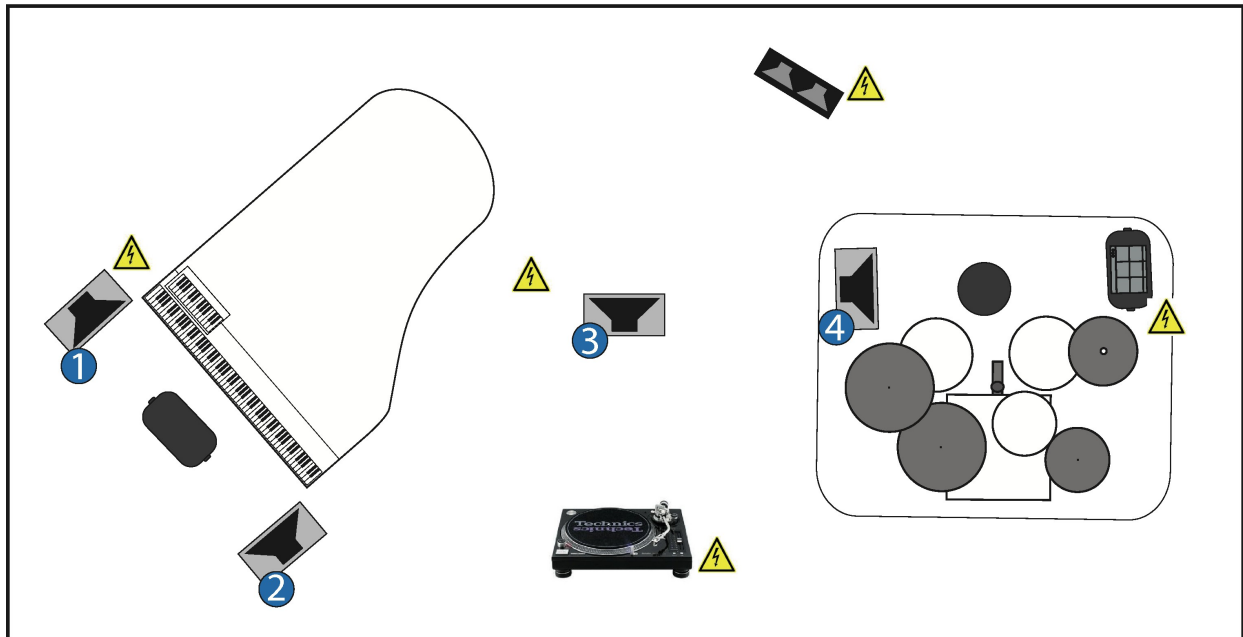


RUSCONI



Stefan Rusconi – Piano, Micro-Korg, Voice
Fabian Gisler – Doublebass, Guitar, Voice
Claudio Strüby – Drums, Percussion, Voice

Contact Band:
Stefan Rusconi
info@rusconi-music.com
 +49 176 84381367 (German Cellphone)
 +41 76 3840310 (Swiss Cellphone)

CH	Source	MICs	Stand
1	bassdrum reso	md421/d112/sm57	short stand
2	snaredrum top	beta57/sm57	short stand
3	hihat	km184/sm81	short stand
4	racktom	md421/ beta98 /sm57/e904	short stand
5	floortom	md421/ beta98 /sm57/e904	short stand
6	floortom II (optional)	md421/beta98/sm57/e904	short stand
7	glockenspiel/radio	km184/sm81	short stand
8	overhead l	u87/ km184 /mk4	tall stand
9	overhead r	u87/ km184 /mk4	tall stand
10	sampler SPD-SX L	(own DI)- XLR	-
11	sampler SPD-SX R	(own DI)- XLR	-
12	acoustic guitar	DI	-
13	guitar amp	sm57/md421	short stand
14	bass pickup, post FX	(own DI)- XLR	-
15	bass mic	dpa4021 (own) - XLR	-
16	piano hole	sm57	tall stand
17	piano pickup A	yamahiko (own) - XLR	-
18	piano pickup B	yamahiko (own) - XLR	-
19	piano mic A	u87/ km184 /mk4	tall stand
20	piano mic B	u87/ km184 /mk4	tall stand
21	piano FX l	DI	-
22	piano FX r	DI	-
23	mikrokorg	DI	-
24	spare		
25	vox pianist	sm58 with switch (own)	tall stand
26	voc bassplayer	sm58 with switch (own)	tall stand
27	voc drummer	sm58 with switch (own)	tall stand
28	announcement	sm58 wireless if possible	tall stand
29	turntable l	DI	-
30	turntable r	DI	-

RUSCONI

we bring
we need

category Q

Grand Piano	1	grand piano, optimally prepared and conditioned, tuned before sound check and before concert. (piano tuner shall be present at sound check)		X
	1	adjustable piano bench		X
	x	grand piano stereo pickup (yamahiko): will be mounted by our piano player before soundcheck. mounting can take up to 20 minutes!	X	
	y	in case we agreed on playing a concert without grand piano, please provide NORD STAGE 2, 88 key version.		X
Doublebass	1	3/4 solid wood bass with „fishman full circle“ pickup (if not possible „realist“ pickup from david gage). Spirocore medium thomastik strings.		X
	->	NOTE: we usually don't use a bass amp if the monitor wedges are of high quality. we prefer to use a powerful 15"/2" wedge on a little riser in front of the bassplayer. if the monitoring situation is not convincing, we use a bass amp as mentioned below:	<-	
	1	bass amp: gallien-krueger top 400RB-IV or 700RB-II with suitable box: preferably 4x10" (SWR, ampeg)		X
Drumset	->	general: jazz drumkit, all maple-shells – all equipped by „remo ambassador skins. NO ROCK DRUMS, PLEASE – drummer brings his own cymbals and SPD-SX (incl. stereo DI passive)		X
	1	bassdrum 18"x14" „remo ambassador coated“ on both sides		X
	1	snaredrum 14"x6.5"		X
	1	racktom 12"x6"		X
	1	floortom 14"x12"		X
	1	floortomII 16" – OPTIONAL, if available		X
	1	hardware: bd-pedal, hihat-stand, 2x snare-stand, racktom holder, floortom legs		X
	3	cymbal stands		X
	1	drum throne		X
	1	drum carpet		X
	1	piano bench (or similar) to put SPD-SX and glockenspiel		X
Guitar/Amp	1	amp for electric guitar (Fender "Hot Rod Deluxe" or Vox "AC30")		X
	1	guitar stand		X
	1	acoustic 6-string western guitar with built-in pickup	(X)	(X)
Record Player	1	turntable with accurate pickup system (technics 1012 MK2 or similar) – we will bring along a phono preamp (RIAA), so no mixer is needed!		X
	->	we use the record player to play back music from the stage. we also sometimes play records before the concert. the record player will be set up in the middle of the stage, and it is nice if you could give it an extra light spot.	<-	
PA	1	first class stereo PA-system, appropriate for delivering high SPL at highest sound quality to the entire audience. main stereo system must be flown above stage front. In big venues, 4...6 small front fill speakers should be added at stage level for the first rows. (preferred systems: meyer sound, l-acoustics, d&b or nexo)		X
Monitoring	4	identical, seperatly amped floor wedges		X
	4	graphic equalizer 31band for every monitor line		X
	->	NOTE: usually we need 2 hours of setup and soundcheck time. in big venues, in shorter soundcheck- or linecheck situations, a monitor desk with experienced monitor engineer is required.	<-	
Micstands	10	tall mic stands (extendable boom arm version required)		X
	8	short mic stands		X
Mics	4	high class cardioid condenser mics for piano and overheads (U87/km184/mk4)		X
	2	cardioid condenser mic for hihat and glockenspiel (km184/sm81/ck391)		X
	2	dynamic vocal mics (sm58)		X
	8	dynamic instrument mics for BD/SD/toms/piano hole (sm57/md421/etc.)		X
	6	DI boxes (BSS AR-133)		X