

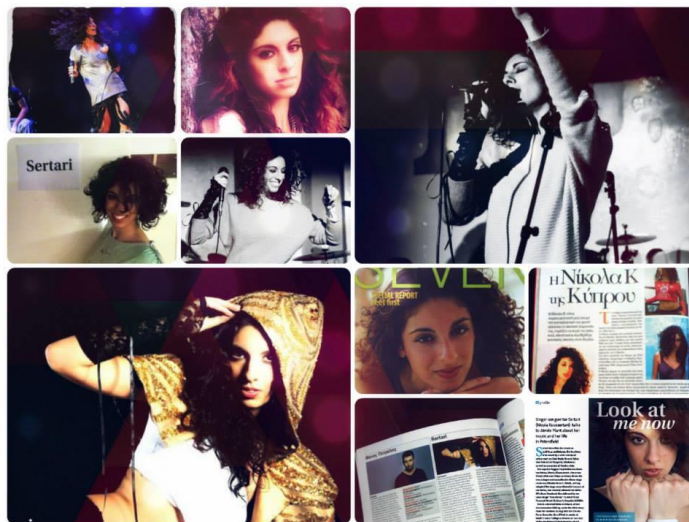
## [Sertari - Live Show Rider/Tech Spec]

### Full live band set-up:

- Vocals: Mic stand, 1-XLR output from TC-Helicon Voicelive. *Monitors.*
- Guitars: Guitar amp plus 2 x DI to desk for bass guitar and acoustic guitar. *Monitors.*
- Drums/Production: Drum kit, 2 x input to desk from Roland Sample Pad. 2 x input to desk from synth. *Monitors*

### Unplugged/Acoustic set-up:

- Vocals: Mic stand, 1-XLR output from TC-Helicon Voicelive. *Monitors.*
- Guitars: Guitar DI to desk for acoustic guitar. *Monitors.*
- Drums/Production: Cajon, 2xinput to desk from Roland Sample Pad. 2 x input to desk from synth. *Monitors*



[www.sertari.com](http://www.sertari.com)

[Sertari@live.com](mailto:Sertari@live.com)