

RIDER
LIVE SHOWS W/ FULLBAND



AMANDA
TOVALIN *presents "EL ORIGEN"*

Songs with contemporary jazz and experimental
arrangements

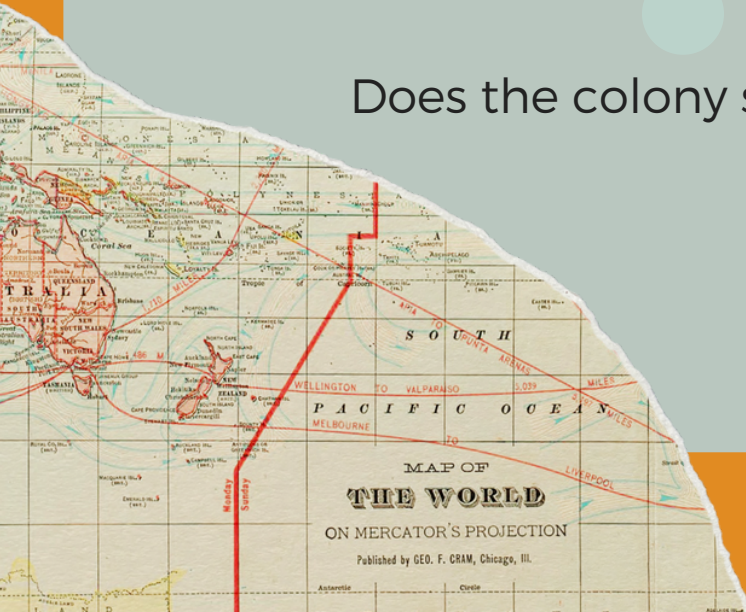
EL ORIGEN (LP)

The Origin is the name of Amanda Tovalin's fourth LP. It is a project that won support from international creators fund Ibermúscas 2020 and is inspired by reflections on contemporary Latin American identity.

For the project Amanda worked with contemporary musical, visual and sound artists from Chile, Peru, Brazil, Argentina and Colombia in a blend that combines improvisation with folk, jazz, lofi and sound design.

What does it mean to be Latinx?

Does the colony still affect us today?



"Amanda has been in charge of exploiting a delicate and structured sound that shows the beauty of jazz, combined with the great richness of Latin American folklore." (2021)

Liliana García, Rolling Stone MX

ÍNDICE



3

INTRO

4

RIDER

6

CATERING

7

INPUT LIST

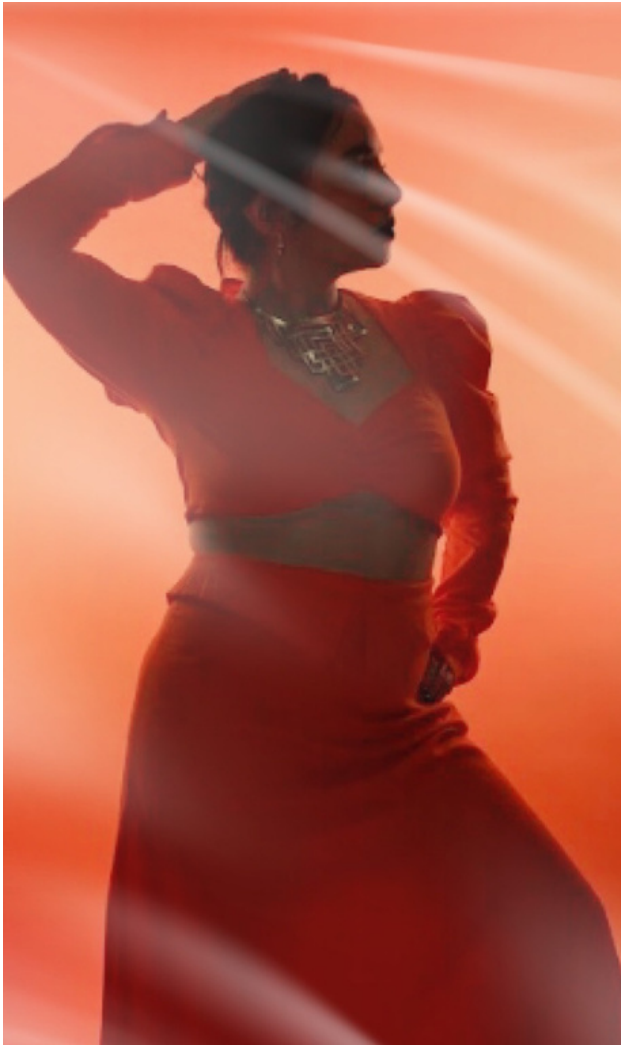
8

STAGE PLOT

9

CONTACT





INTRO

Thank you very much for taking the time to read this information. This rider consists of all the needs that Amanda Tovalin has as an artist to give the best possible performance and deliver a quality show.

We hope it leaves you with a clear picture of all the needs and requirements.

For any changes to this rider you are welcome to contact the organizers or Amanda's team as soon as possible.

We believe that all changes can be resolved with advance notice. All changes must be made in writing to protect both parties involved and to be made as quickly as possible.

This is a concert of jazz, experimental music and author songs. The audio must respect the genre and its style at all times.

Please send us your information: contrarider, lighting and backline as soon as possible to the following emails:

Contact@amandatovalin.com
marsoundsbooking@gmail.com

RIDER TÉCNICO

MÚSICIANS + STAFF

TRIO

1. Amanda Tovalin-voice, violin and live looping
2. Guitar and synths or piano
3. Jazzkit drums and secuencias
- *Negociables*
4. Ingeneer
5. Visualist

FULLBAND

1. Amanda Tovalin-voice, violin and live looping
2. Guitar and synths
3. Piano
4. Jazzkit drum and secuencias
5. Doublebass
- *Negociables*
6. Visualist
7. Live audio ingeneer
8. Back up singer or instrument invited

SET DURATION

1 h

BACKLINE REQUESTED

GENERAL

- 1 stool
- 2 computer tables
- 7 direct boxes
- 1 multi-contact
- 6 plug cables
- 6 xlr cables
- 3 reading stands

PER INSTRUMENT

A. LEAD VOCALS

1 SHURE SM58 MICROPHONE OR SIMILAR
WITH PEDESTAL.

B. FIDDLE

DIRECT BOX

*IN CASE YOU DO NOT HAVE A CONDENSER MICROPHONE (SMS81 OR MXL
OR SIMILAR) WITH PEDESTAL

C. GUITAR

1 LANEY LION HEART, VOX OR FENDER DEVILLE AMPLIFIER OR SIMILAR (MIC TO AMP.)
1 GUITAR STAND
2 D.I FOR LAPTOP

D. PIANO

ACOUSTIC 1/4 TAIL TO TAIL YAMAHA OR STENWAY OR ELECTRIC PIANO 88 KEYS NORD
LEAD, KORG OR CASIO.

E.1 DRUMS AND SAMPLE PAD

5-PIECE DRUM SET BY YAMAHA OR GRETSCH:

1 16" BASS DRUM

1 14" SNARE

10" AIR TOM

14" FLOOR TOM

INPUT LIST BELOW

E.2 D.I FOR SAMPLE OCTO PAD ALESIS

FULLBAND

F. DOUBLE BASS

1 AMPEG OR DIRECT BOX

G. GUESTS

HAVE A MICROPHONE FOR EXTRA VOICE FOR GUEST OR ENCOURAGEMENT. IT WILL BE
ANNOUNCED IN ADVANCE IF THERE WILL BE GUESTS..

LIST OF EQUIPMENT MUSICIANS HAVE

- PEDAL BOSS RC.202
- MICRÓFONO AKG
- PEDAL BOARD(SKYSURFER.DITTO-ARMONIZADOR)
- VIOLÍN ACÚSTICO
- GUITARRA GRESTCH ELECTROMATIC
- 2 PEDALES DE ELECTRO HARMONIX
- LAPTOP MACBOOK PRO
- INTERFACE FOCUS RITE CLARETTE
- CONTROLADOR AKAI APC MINI
- ALESIS SAMPLE PAD 8
- PEDAL BOARD



MINIMUM MEASUREMENTS OF SUGGESTED SCENARIO

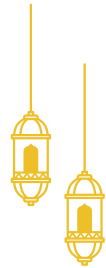
- MK TOMCAT STRUCTURE OF 12 METERS. MOUTH X 9 METERS. DEEP, 6 METERS. HIGH • -
- FLY SYSTEM OF 1.5 METERS. AT 6 METERS. TALL •
- STAGE OF 11.25 METERS. X 8.75 METERS. AT 1.40 METERS. TALL
- MASTER CEILING OF 13 X 10 METERS.

OFFSTAGE WORK AREAS AND REQUIREMENTS

- 1 DRESSING ROOM FOR MUSICIANS WITH FULL-LENGTH MIRROR

SUGGESTED LIGHTING TECHNICAL SHEET

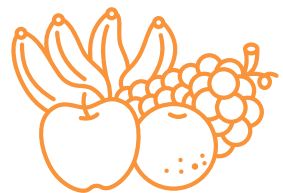
- 12 COB W LED FRESNELS
- 24 LED PAR – LITE COLOR – TEK
- 10 WASES LED ZOOM CONIC • 6 WASES CONIC SQW – 36 •
- 12 BEAMS LITE – TEK 7R
- 4 LITE LED STROBE – TEK
- 1 AVOLITE – TITAN MOBILE LIGHTING CONSOLE



CATERING

IMPORTANT: AMANDA IS ALLERGIC TO TAC (CELIAC DISEASE)
SO SHE CAN'T EAT ANYTHING WITH GLUTEN.

- VEGETARIAN OR VEGAN
- WATER AND SEASONAL FRUIT
- WATER JUG (THE TEAM WILL BRING THEIR THERMOSES))



INPUT LIST

Amanda

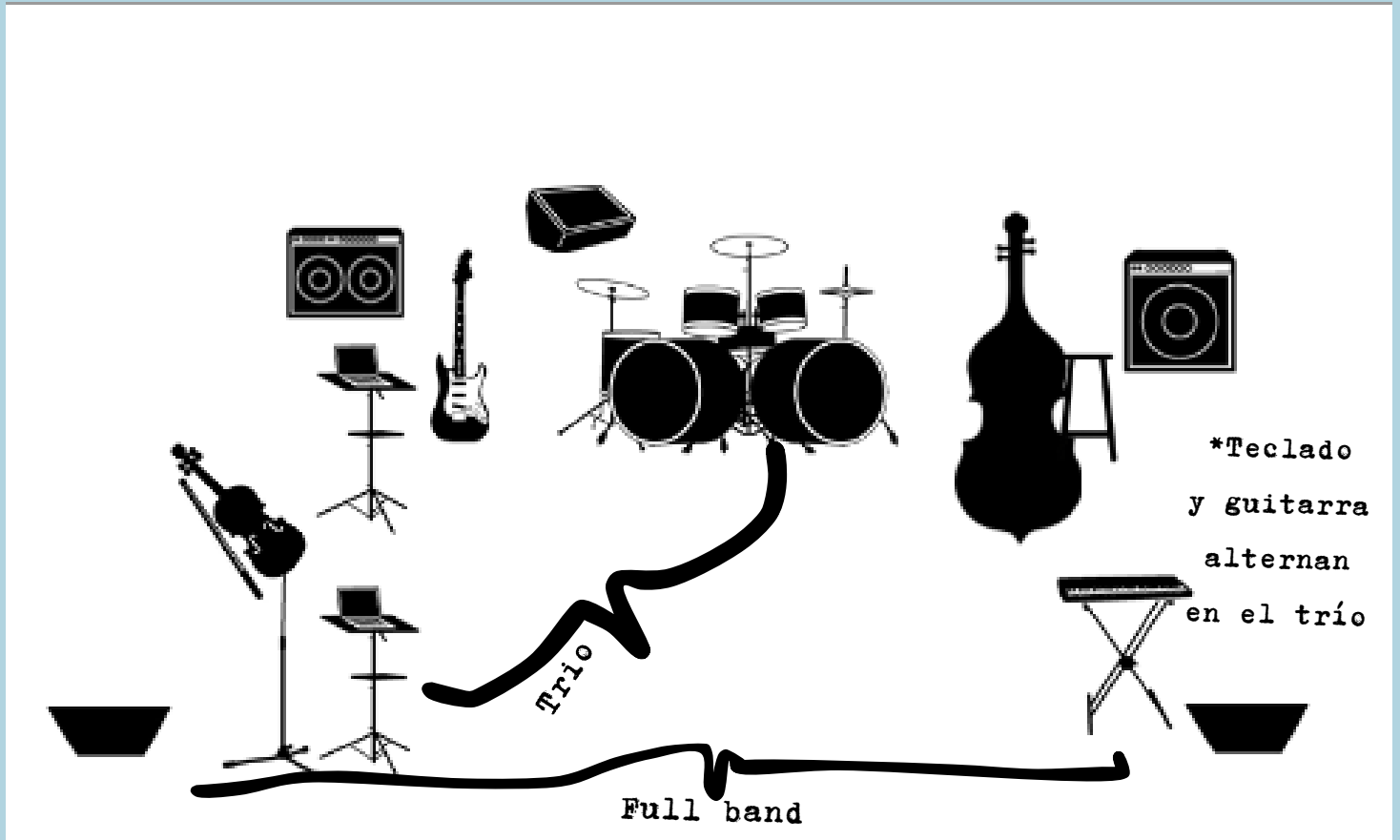
GTR Y LAPTOP

DRUMS

KEYS
BASS

CHAN.	INSTRUMENT	MIC	NOTES	STAND
1	Voz	Shure Sm58, AKG o parecido	Plugged to looper	Straight boom
2	Violín	D.I	Plugged to looper	
3	Voz II	Shure Sm58, AKG o parecido	Plugged to looper	Straight boom
3	Guitarra	AMPLIFICADO R FENDER DEVILLE III	Plugged to looper	Short boom
4	Laptop L	D.I		
5	Laptop R	D.I		
6	Kickdrum	Beyer M-88		Short boom
7	Snare bottom	Shure SM-57		Short boom
8	Snare to top	Shure SM-57		Short boom
9	HI-HAT	Condenser		Straight stand
10	Floor tom 1	Senn .604/504		LP Claw
11	Floor tom 2	Senn .604/504		LP Claw
12	Overhead left	condenser		Straight boom
13	Overhead right	condenser		Straight boom
14	Key 1 LEFT	D.I		
15	Key 1 RIGHT	D.I		
16	Up right bass	D.I		

STAGE PLOT



OBSERVATIONS

1. IF YOU DONT HAVE INNEARS*WE USE A FLOOR MONITOR SYSTEM WITH ELECTRONIC SEQUENCES SO IT IS IMPORTANT FOR US TO HAVE THREE MONITORS PLACED IN A TRIANGULAR MANNER TO REINFORCE THE ARRIVAL OF THE SEQUENCES.
2. IN TRIO FORMAT THE ALIGNMENT CHANGES FROM HALF MOON TO TRIANGLE

CONTACT

CREW

Amanda Tovalín
Director

contacto@amandatovalin.com
5591863698

Daniela Medina
General producer

marsoundsbooking@gmail.com
+523314411439

Alonso Magaña
Tech supervisor

alonsomus01@gmail.com
5521281543

Ana Rodelo
PR

rodeloagency@gmail.com
+52 56 1074 9515